

4PRINT

OPTION



**INSTALLATION & OPERATION
GUIDE**



INDEX

Description	5
Box contents	6
Previous requirements	7
Option card	8
Option installation	10
Verifying Option installation on Plotter	11
Verifying Option installation on Software	12
Assembly	13
Technical Service	20
Notes	21



DESCRIPTION

4Print option allows the plotter to increase printing performance.

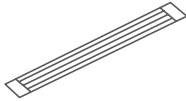
Doubling the swath height contributes to better print results per square meters per hour.

BOX CONTENT

Check the boxes to verify that all parts are present.



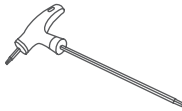
x2 - Cartridge Holders



x2 - Flat Cables



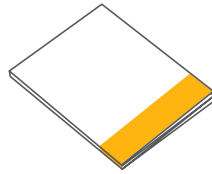
x1 - Spring



x1 - T10 Torx tool



x1 - Bag



x1 - Installation & Operation guide



x1 - Activation card



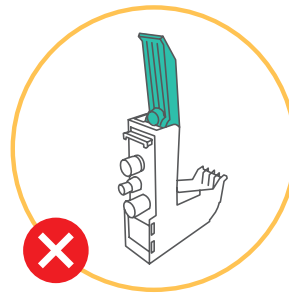
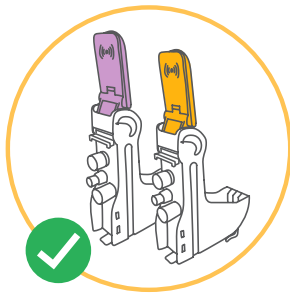
PREVIOUS REQUIREMENTS

- Verify that the plotter firmware version is higher than 6.0.0.0.

To find out your plotter's firmware version, go to:

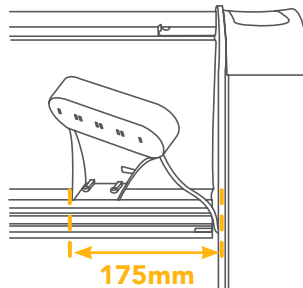
Menu > Options > Info> Firmware versions

- Ensure that the current carriage deck is compatible with the option before installing it:
 - If your latch is yellow or purple, you can install this option.
 - If your latch is turquoise, please contact with your dealer.



Only Speed Pack installation:

- Check that the antenna assembly is located at 175mm from left side corner of white antenna to the bench.



OPTION CARD

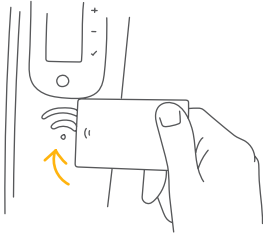


TDOT

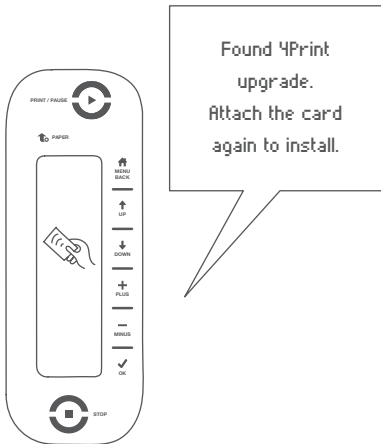
POWERFULLY REIMAGINED



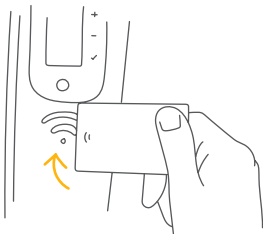
OPTION INSTALLATION



01. Get the option card and pass it through the RFID zone (on the right side panel) for at least 2 seconds, until you hear the acoustic signal.

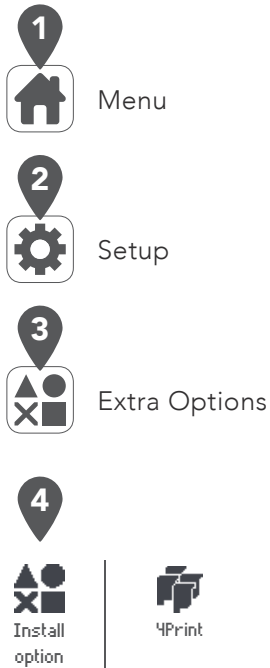


02. Check the verification message installation in the display.



03. Pass again the card to validate the installation, until you hear the acoustic signal.

VERIFYING OPTION INSTALLATION ON PLOTTER



On the plotter operator panel keyboard press the Menu button. (1)

Select the Setup menu (2) and press Ok.

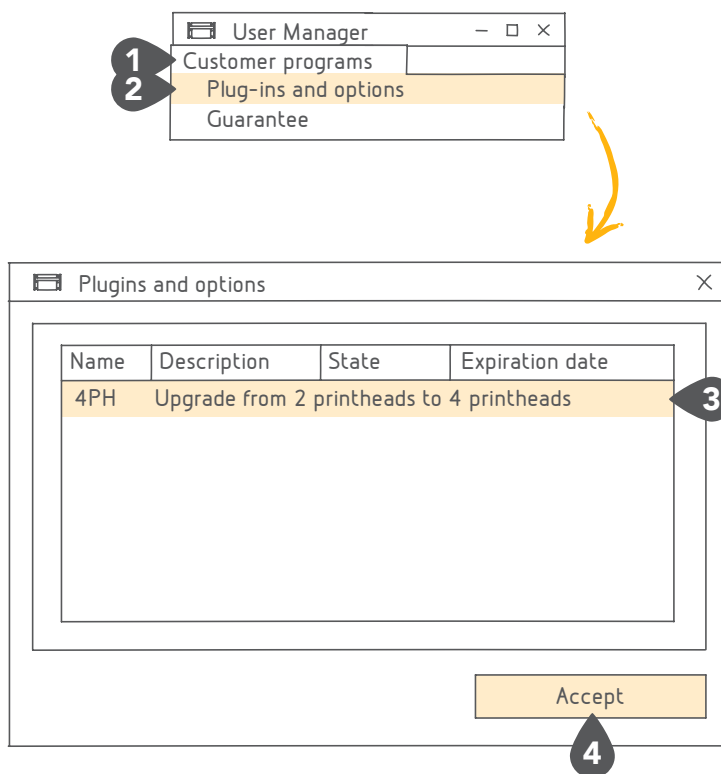
Select the Extra Options menu (3) and press Ok.

Check the installation of the **4Print** option. (4)

Press the Menu button to get back.

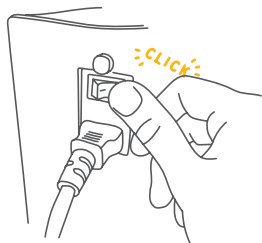
VERIFYING OPTION INSTALLATION ON SOFTWARE

In the main User Manager screen select the "Customer Programs" (1) and select "Plug-ins and Options" (2). Check that the 4Print option is correctly installed (3). Press Accept to exit.

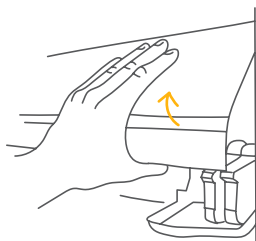


- * To verify the installation using the lan connection, the server must be configured previously.

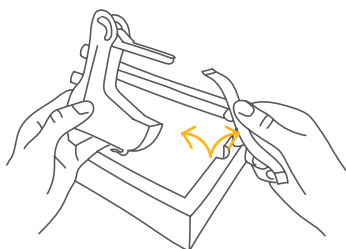
ASSEMBLY



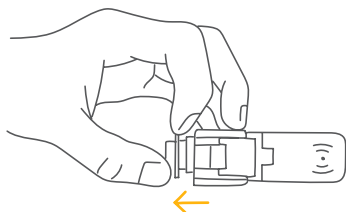
01. Turn off.



02. Open the Front Cover.

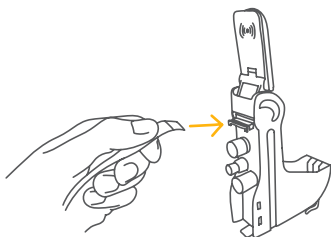


03. Take out from the box one Cartridge Holder and one small Flat Cable.

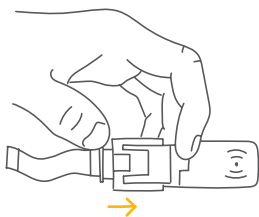


04. Unlock the connector tab from the Holder pcb.

ASSEMBLY



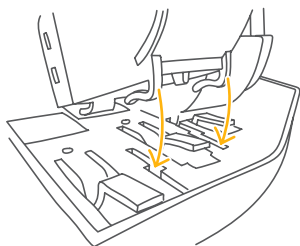
- 05.** Insert the cable in the connector slot.



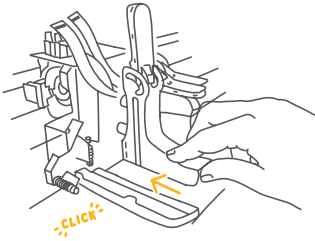
- 06.** Lock the connector tab to fix the Flat Cable.



- 07.** Place the Holder in the third Cartridge position in the deck.



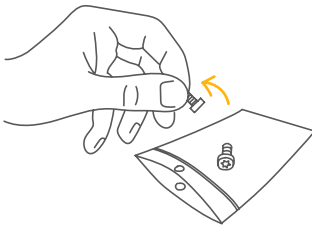
- 08.** Insert carefully the Holder clips into the deck slots.



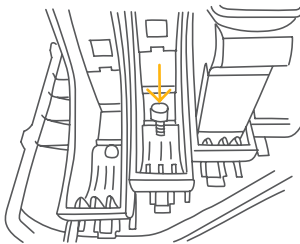
09. Slide in the Holder to lock it. Notice the mechanical “click”.



10. Repeat the operation with the other Holder and Flat Cable. Place it to the last deck position.



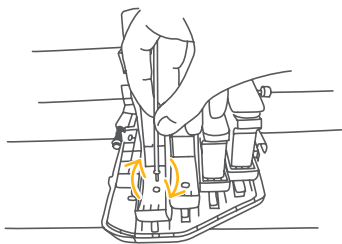
11. Once the Holders are clipped take a screw from the bag.



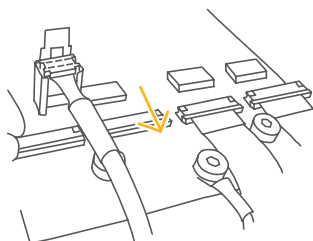
12. Fasten the third Cartridge Holder.



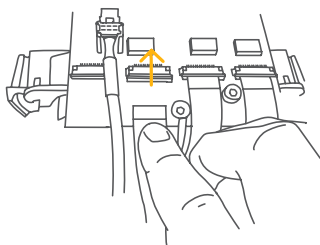
ASSEMBLY



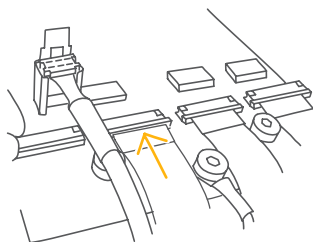
- 13.** Repeat the operation to screw the fourth Holder.



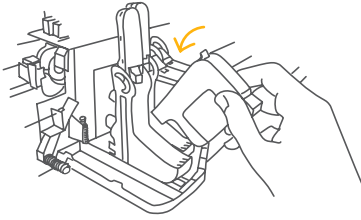
- 14.** Unlock the third connector tab from the carriage deck pcb.



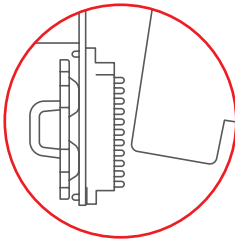
- 15.** Insert the cable in the connector slot.



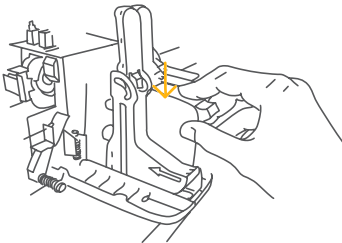
- 16.** Push the connector tab to lock the Flat Cable.



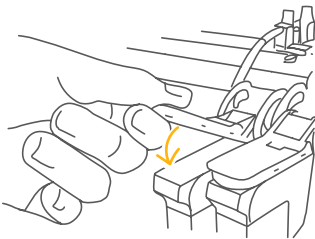
17. Place the Cartridges in the Holders.



18. Be aware to don't scratch the Cartridge head with the Holder Contact Pins.



19. Press down the Cartridges to insert them in the Holder.

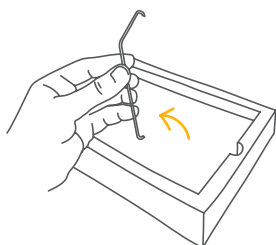


20. Close the Holder Latches to lock the ink Cartridges.

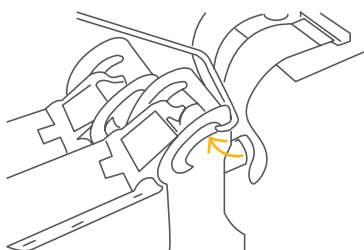
ASSEMBLY



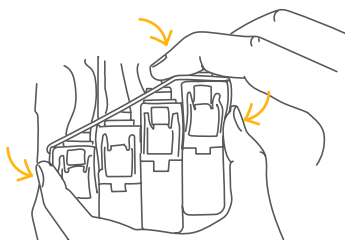
- 21.** Repeat the operation with the fourth Holder Cartridge and Flat Cable.



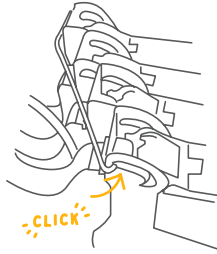
- 22.** Take out from the box the Spring.



- 23.** Place the short part of the Spring into the right hole of the deck.

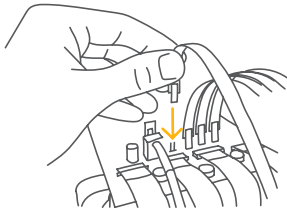


- 24.** Push the Spring and the deck as shown.



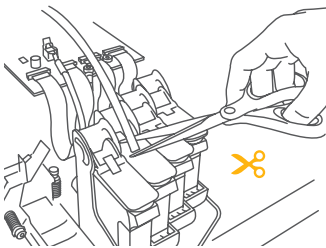
25. Place the other extreme at the left hole of the deck.

Only TDOT model:

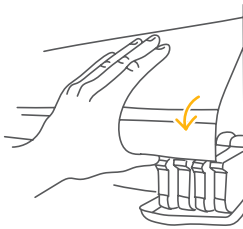


26. Connect the little Flat Cables from the Holder, into the connectors of the electronic board of the printhead.

Only DOT model:



26. Cut the little Flat Cables from the new Holders.



27. Close the Front Cover and turn on the plotter.

TECHNICAL SERVICE

Please contact your dealer for technical support in case of any issue.

NOTES

204442_191001